



WORLD'S BEST  
ALLOY BULLBARS

East Coast Bullbars (ECB Pty Ltd)

Tel: 07 3897 5700

Fax: 07 3283 1168

ecb@ecb.com.au www.ecb.com.au

29 Snook St  
Clontarf QLD 4019  
Australia

Po Box 122  
Margate QLD 4019  
Australia

**EAN106SY**

REPLACES: 12.11.12  
REVISED: 15.01.13

**FITTING INSTRUCTIONS  
NISSAN PATHFINDER R51 05/10on  
& NAVARA D40 ST-X 05/10on ARC™ PROTECTION BAR  
VEHICLE FRONTAL PROTECTION SYSTEM (VFPS)  
FOR AIR BAG & ADR COMPLIANT VEHICLES**

Check installation hardware before commencing.

1. Carefully cut around templates (supplied) for bumper trim using scissors. **See figure 1** for placement. **CAUTION:** Measure template to ensure correct size, some printers may vary.
2. To avoid damage to vehicle when cutting, use masking tape to cover area where template is placed on vehicle. Place template onto vehicle and mark cut line. From lower front of template, continue line around front of vehicle to top corner of centre vent. Line should run 15mm above fog light opening. **Caution:** Ensure markings on template match area on bumper.
3. Remove lower plastic trim from bumper cover. Six 10mm head bolts.
4. Remove inner guard from edge of plastic bumper skin. Two PK screws (two 10mm head bolts on extra cab) from under side of bumper and one pk screw on front edge of wheel arch. **Caution:** Ensure rear of bumper at cut line is free from electrics harnesses and headlight water tubes before cutting. Remove Headlight washers from bumper (if fitted) before cutting.
5. Using a jigsaw or similar, cut area previously marked using template.
6. Remove lower half of plastic bumper cover. Four 10mm head bolts on underside of bumper.
7. Disassemble engine shield, remove two 10mm head bolts on front of Engine shield; loosen rear 10mm head bolts and slide forward to remove.
8. Remove bumper support, two 17mm head bolts (per side).
9. Remove tow hook from passenger's side of vehicle, two 17mm head bolts.
10. Install ECB steel mounting brackets onto vehicle. Four M12 x 40mm bolts, spring washers and flat washers (supplied) (per side). Two bolts under vehicle and two on front of chassis rails. **Finger tighten only. See figure 2 and 3.**
11. Align mounts to centre of vehicle.
12. **Tighten all bolts.**
13. Disconnect indicator and parking lights on vehicle. Install ECB quick click wiring harnesses (supplied) between disconnected harness and indicator / park lights on vehicle. Run wiring out from under lights ensuring clearance from sharp edges and moving parts.
14. Fit ECB LED indicator / park lights (supplied) into protection bar as per instructions supplied with the LED indicator kit. **NOTE: Ensure park light is to outside. See figure 4.**



**WORLD'S BEST  
ALLOY BULLBARS**

**East Coast Bullbars (ECB Pty Ltd)**

Tel: 07 3897 5700

Fax: 07 3283 1168

ecb@ecb.com.au www.ecb.com.au

29 Snook St  
Clontarf QLD 4019  
Australia

Po Box 122  
Margate QLD 4019  
Australia

15. Attach 6mm clip lock trim (supplied) to top of ECB protection bar. **NOTE:** Trim off lower edge on an angle so trim will sit flush with end of protection bar. **See figures 5, 6 and 7.**
16. Attach 3mm clip lock (supplied) to underside of bumper trim on sides of vehicle. **NOTE:** Trim edge on an angle so trim will sit flush with both ends of plastic bumper cut area. **See figure 8.**
17. Fit ECB protection bar to outside of steel mounting brackets. Use ½ x 1 ½ bolts, flat washers, spring washers and nuts (supplied). **Finger tighten only.**
18. Align ECB protection bar with vehicle allowing minimum 12mm between bar wings and bumper cut for body twist. **Tighten all bolts. See figures 9 and 10.**
19. Fit ECB under body guard to top of skirt leg using three M6 x 20 bolts, flat washers and nyloc nuts, and two ½ x 1 bolts, flat washers, spring washers and nuts. Refit engine cover to top of under body guard using M6 x 20 bolts, flat washers and nyloc nuts. **Tighten all bolts. See figure 11.**
20. Trim inner guards to suit shape and height of bumper. **See figure 12 .**
21. Connect indicator /park lights. Check for correct operation.

**ENSURE NUMBER PLATE IS CLEARLY VISABLE**

**Note:** When fitting/refitting the licence plate to the vehicle, ensure there is no obstruction to licence plate vision in accordance with local authorities. If required relocate licence plate to an alternate location.

**Further VFPS Notes:**

- a) Do not attach VFPS to the vehicle using anchorages not intended for this purpose (e.g. engine mounting bolts).
- b) Do not use this product for any vehicle make or model, other than those specified by the VFPS manufacturer.
- c) Do not remove the plaque or label from the VFPS.
- d) Do not modify the structure of the VFPS in any way.
- e) No accessory or fitment should project forward of the VFPS forward profile.
- f) **ENSURE THESE INSTRUCTIONS ARE LEFT WITH VEHICLE OWNER AND/OR OPERATOR.**

**IMPORTANT INFORMATION**

Periodically check bolts and nuts for correct tightness, especially if travelling on rough roads

**FITTING KIT**

1 – Pair ECB Steel mounting brackets	8 – M12 spring washers
1 – Alloy under body guard	5 – M6 x 20 bolts
8 – ½ x 1 ½ bolts	10 – M6 Flat washers
16 – ½ flat washers	5 – M6 nyloc nuts
8 – ½ spring washers	1 – ECB LED Indicator / Park light kit
8 – ½ nuts	1 - Quick Click Indi / Park kit (IC05NAVECB100H)
8 – M12 x 1.25 x 40 bolts	1 – 2500mm length 6mm clip lock trim
8 – M12 flat washers	2 – 500mm length 3mm clip lock trim

Please check to ensure accuracy of scale  
80mm

JOIN BUMPER TO GUARD  
ALIGN HERE

EDGE OF WHEEL ARCH  
ALIGN TEMPLATE HERE

CUT LINE

CUT LINE

CUT LINE

CUT TEMPLATE;  
SLIDE UNDER  
EDGE OF  
HE

JOIN TEMPLATE HERE JC

JOIN TEMPLATE HERE JC



**WORLD'S BEST  
ALLOY BULLBARS**

**East Coast Bullbars (ECB Pty Ltd)**

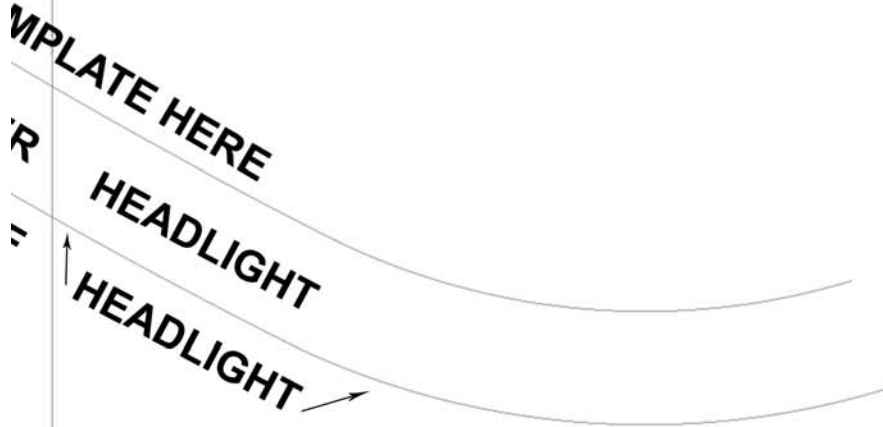
Tel: 07 3897 5700

Fax: 07 3283 1168

[ecb@ecb.com.au](mailto:ecb@ecb.com.au) [www.ecb.com.au](http://www.ecb.com.au)

29 Snook St  
Clontarf QLD 4019  
Australia

Po Box 122  
Margate QLD 4019  
Australia



E JOIN TEMPLATE HERE

E JOIN TEMPLATE HERE

CUT LINE

CUT LINE

Please check to ensure accuracy of scale



CUT LINE

CUT LINE

CUT LINE



**WORLD'S BEST  
ALLOY BULLBARS**

**East Coast Bullbars (ECB Pty Ltd)**

Tel: 07 3897 5700

Fax: 07 3283 1168

[ecb@ecb.com.au](mailto:ecb@ecb.com.au) [www.ecb.com.au](http://www.ecb.com.au)

29 Snook St  
Clontarf QLD 4019  
Australia

Po Box 122  
Margate QLD 4019  
Australia



WORLD'S BEST  
ALLOY BULLBARS

East Coast Bullbars (ECB Pty Ltd)

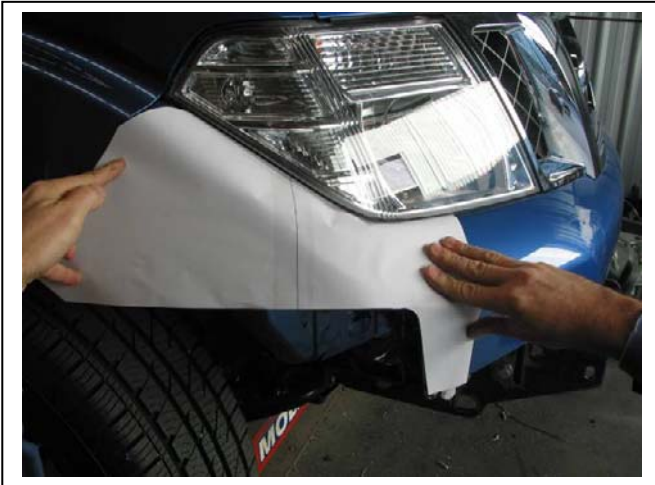
Tel: 07 3897 5700

Fax: 07 3283 1168

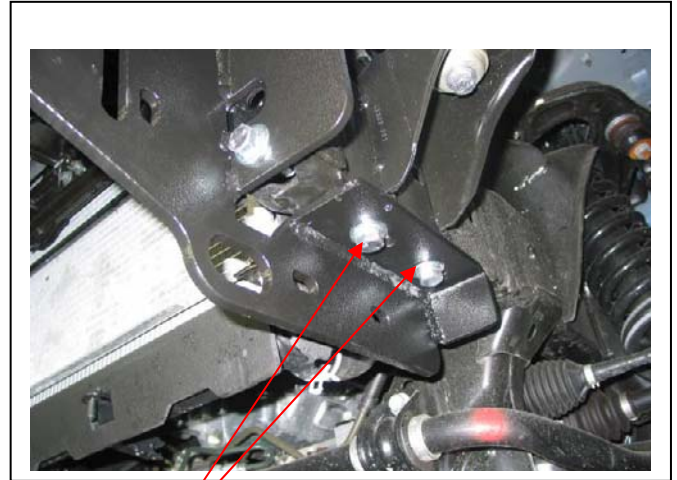
ecb@ecb.com.au www.ecb.com.au

29 Snook St  
Clontarf QLD 4019  
Australia

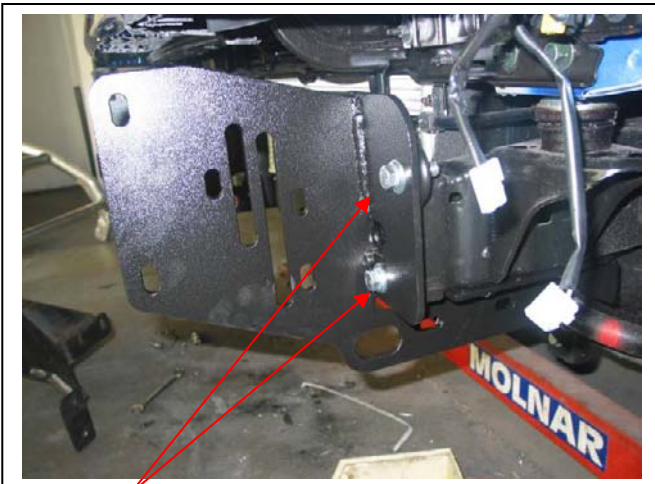
Po Box 122  
Margate QLD 4019  
Australia



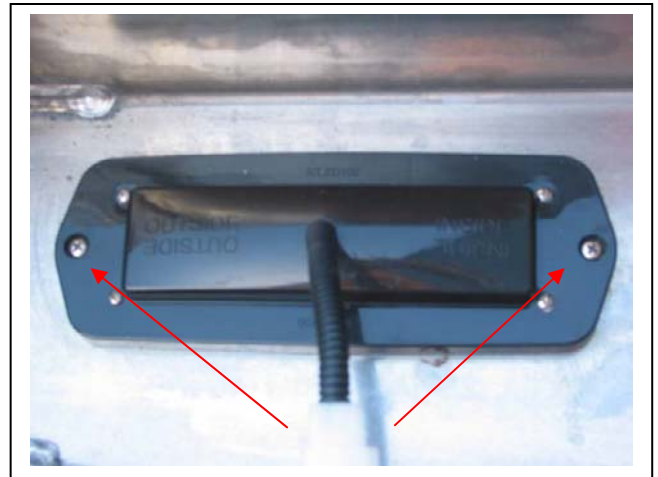
**Figure 1:** Align rear of template to plastic bumper / guard joint. Mark and cut to shape.



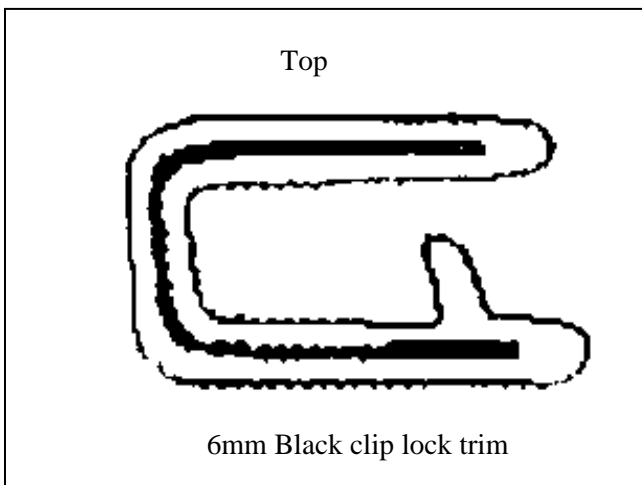
**Figure 2 :** Bolts under vehicle



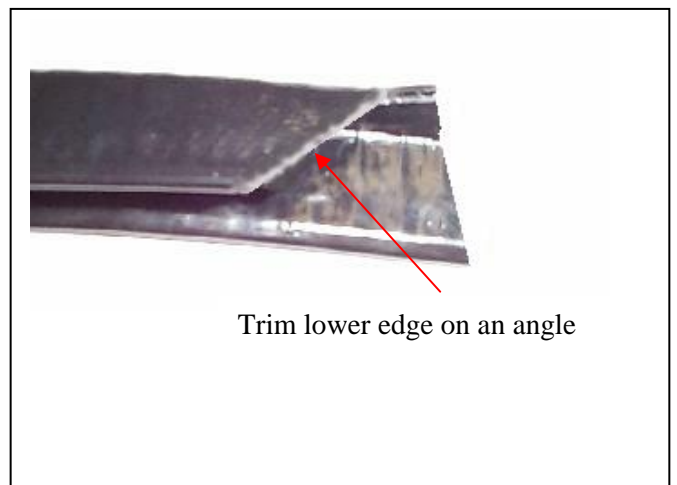
**Figure 3:** Bolts in front of rail



**Figure 4:** Stainless steel self-tapper



**Figure 5**



**Figure 6**



**WORLD'S BEST  
ALLOY BULLBARS**

**East Coast Bullbars (ECB Pty Ltd)**

Tel: 07 3897 5700

Fax: 07 3283 1168

ecb@ecb.com.au www.ecb.com.au

29 Snook St  
Clontarf QLD 4019  
Australia

Po Box 122  
Margate QLD 4019  
Australia



**Figure 7: Clip lock trim**



**Figure 8: 3mm clip lock trim on outer cut edge of plastic bumper.**



**Figure 9: Front view**



**Figure 10: Side view**



**Figure 11:**



**Figure 12: Trimmed under body guard, Passengers side shown**





WORLD'S BEST  
ALLOY BULLBARS

East Coast Bullbars (ECB Pty Ltd)

Tel: 07 3897 5700

Fax: 07 3283 1168

ecb@ecb.com.au www.ecb.com.au

29 Snook St  
Clontarf QLD 4019  
Australia

Po Box 122  
Margate QLD 4019  
Australia

## We value your comments

Dear Fitter,

ECB would like to know how you went with the installation of this product. We value your comment and may need to contact you to clarify some details so please complete your contact details clearly.

We would appreciate if you could complete as many of the following details as possible.

<b>Your Name:</b>	<b>Your contact No.</b>
<b>Product Part No.</b>	<b>Product Invoice No.</b>
<b>Product Description:</b>	<b>Make, model, and year of vehicle:</b>
<b>Product Work Order No.</b>	<b>Company your from/Company product purchased from:</b>

**Date of Fitment:** \_\_\_\_/\_\_\_\_/\_\_\_\_

Was the fitting hardware supplied complete?

Yes

No

If no what was not supplied

---

---

Did the installation go well?

Yes

No

Please provide comments

---

---

---

Please draw diagrams if you need to.

**Post to**  
Reply Paid 122  
PO Box 122  
Margate QLD 4019

**Fax to**  
(07) 3283 1168



**WORLD'S BEST  
ALLOY BULLBARS**

**East Coast Bullbars (ECB Pty Ltd)**

Tel: 07 3897 5700

Fax: 07 3283 1168

ecb@ecb.com.au [www.ecb.com.au](http://www.ecb.com.au)

29 Snook St  
Clontarf QLD 4019  
Australia

Po Box 122  
Margate QLD 4019  
Australia



WORLD'S BEST  
ALLOY BULLBARS

East Coast Bullbars (ECB Pty Ltd)

Tel: 07 3897 5700

Fax: 07 3283 1168

ecb@ecb.com.au www.ecb.com.au

29 Snook St  
Clontarf QLD 4019  
Australia

Po Box 122  
Margate QLD 4019  
Australia

## DESPATCH CHECKLIST EAN106SY

Work Order #	
Finish:	
Transport:	
Due Date:	

- 1– Pair Steel mounting brackets. **Caution: Front mount plates are sided.**
- 1 – Alloy under body guard (Powder coated black)
- 1 – Bolt Kit
- 1 – ECB LED Indicator / Park light kit.
- 1 - Quick Click Indi / Park kit (IC05NAVECB100H)
- 1 – 2500mm length 6mm clip lock trim
- 2 – 500mm lengths 3mm clip lock trim
- 2 – ECB Overrides – **Fitted to Bar.**
- 6 – 6mm Air Scoops – **Fitted to Bar**

**See other side of  
this page for  
photos of all  
mounts**



Is this product “the best it can be” Yes \_\_\_\_\_/\_\_\_\_\_

Wrapper's initials / Checker initials

If **NO** fix before continuing

All parts checked and completed by:

Nut and bolts: \_\_\_\_\_ Date \_\_/\_\_/\_\_

Order control: \_\_\_\_\_ Date \_\_/\_\_/\_\_

Final wrap check: \_\_\_\_\_ Date \_\_/\_\_/\_\_



**WORLD'S BEST  
ALLOY BULLBARS**

**East Coast Bullbars (ECB Pty Ltd)**

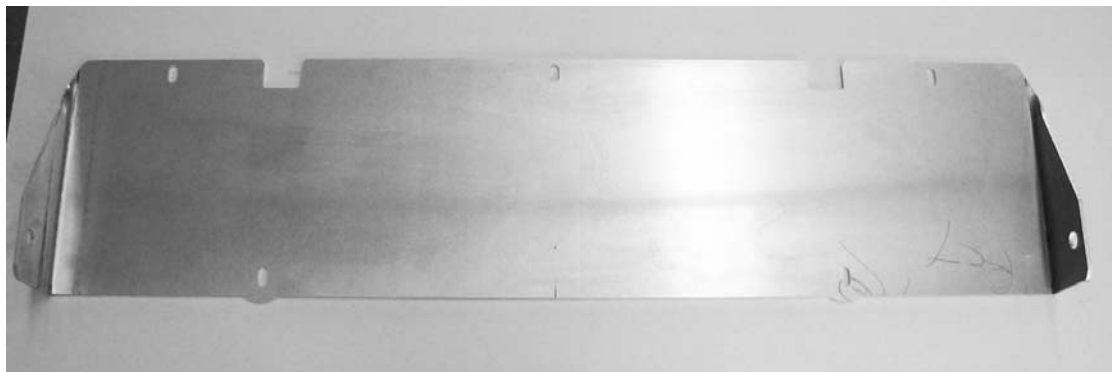
Tel: 07 3897 5700

Fax: 07 3283 1168

ecb@ecb.com.au www.ecb.com.au

29 Snook St  
Clontarf QLD 4019  
Australia

Po Box 122  
Margate QLD 4019  
Australia



3mm Alloy Bashplate